



Windows 7 Configuration of eduroam Connectivity Manual

1. Open 'Network and Sharing Center'



2. Go to 'Manage Wireless Networks'

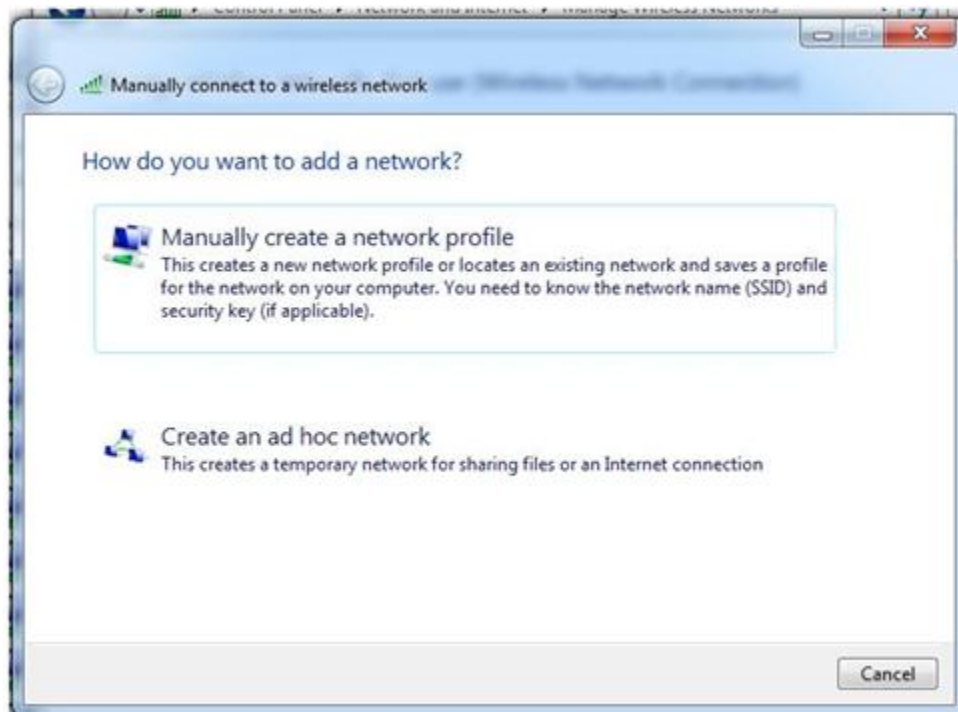




3. Click on 'Add'



4. Choose 'Manually Create a network profile'





5. On network name write “eduroam”

Security type ‘WPA-Enterprise’

Encryption Type ‘AES’

Leave Security Key ‘Blank’

Click on ‘Next’

Manually connect to a wireless network

Enter information for the wireless network you want to add

Network name:

Security type:

Encryption type:

Security Key: Hide characters

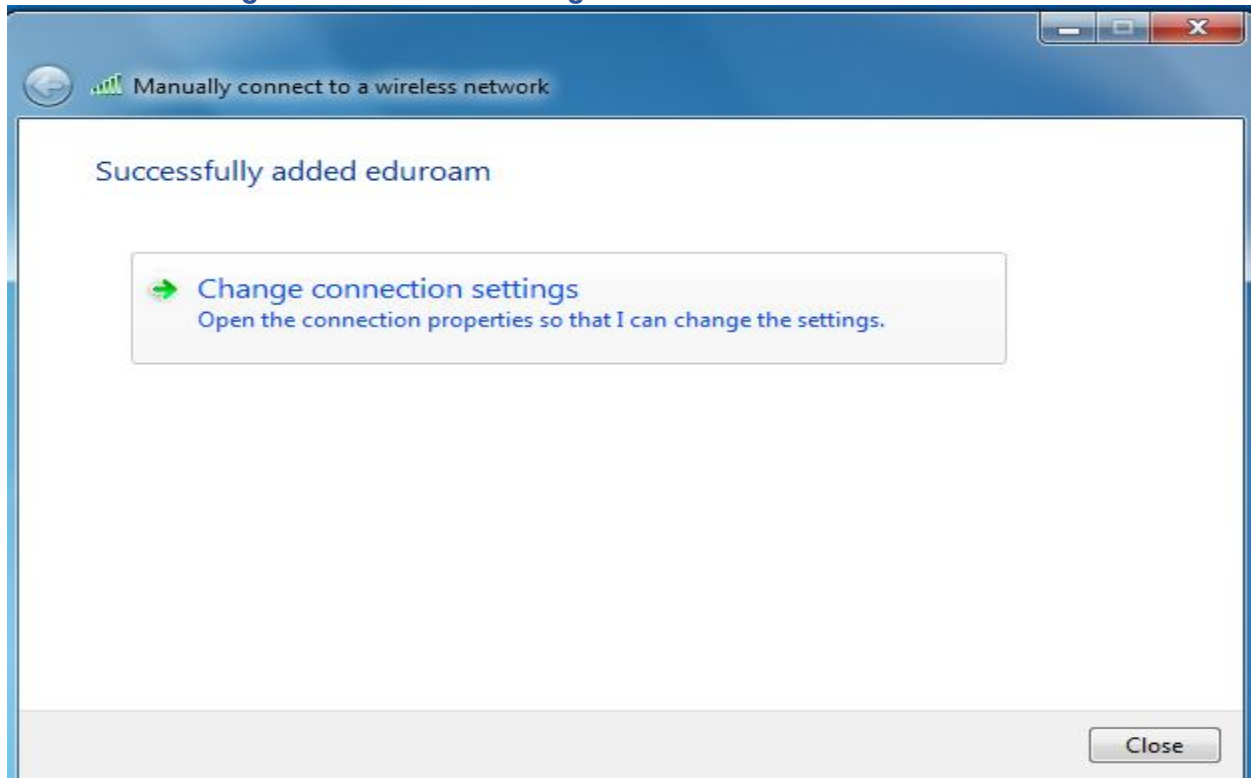
Start this connection automatically

Connect even if the network is not broadcasting

Warning: If you select this option, your computer's privacy might be at risk.



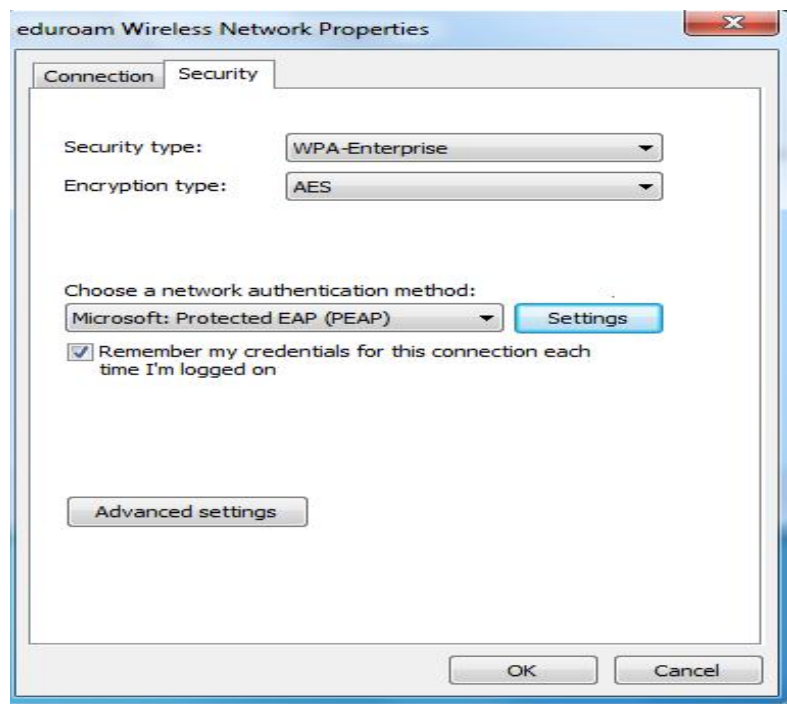
6. Go to 'Change Connection Setting'



7. Select Security Type 'WPA-Enterprise'

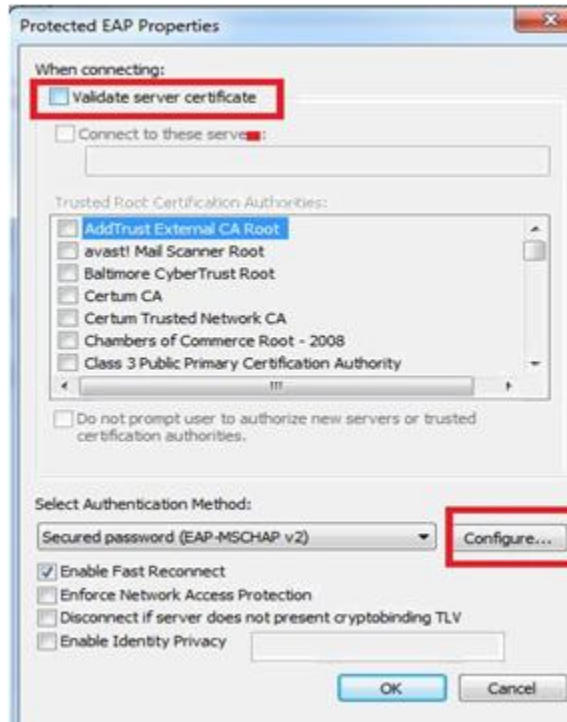
Encryption Type 'AES'

Network Authentication Method: Microsoft: Protected EAP (PEAP) and then click Setting.





8. Uncheck 'Validate server certificate' Click on 'Configure'





9. **Uncheck Automatically use my windows logon name and password (and domain if any) press OK**



10. **Forget / Disconnect or Reconnect with eduroam**

11. **Provide Your Institutional Username and Password**

