

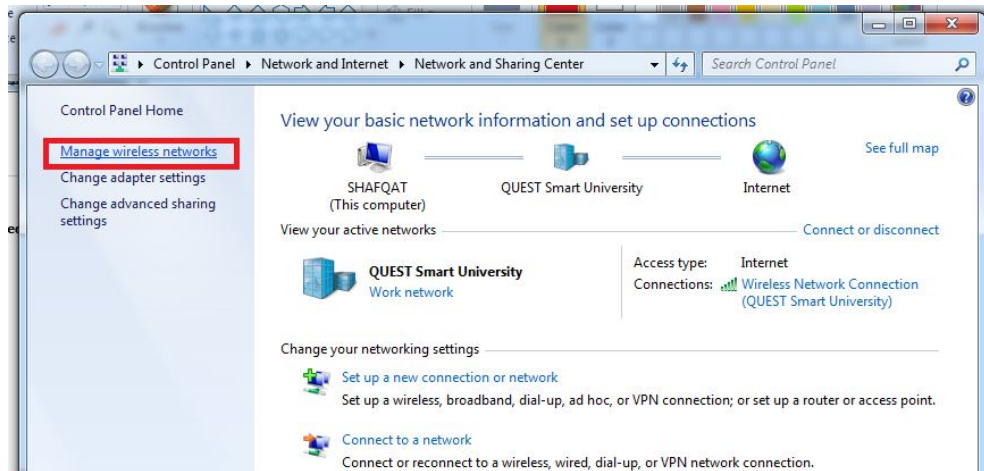


Windows 7 Configuration of QUEST Smart University Connectivity Manual

1. Open 'Network and Sharing Center'



2. Go to 'Manage Wireless Networks'

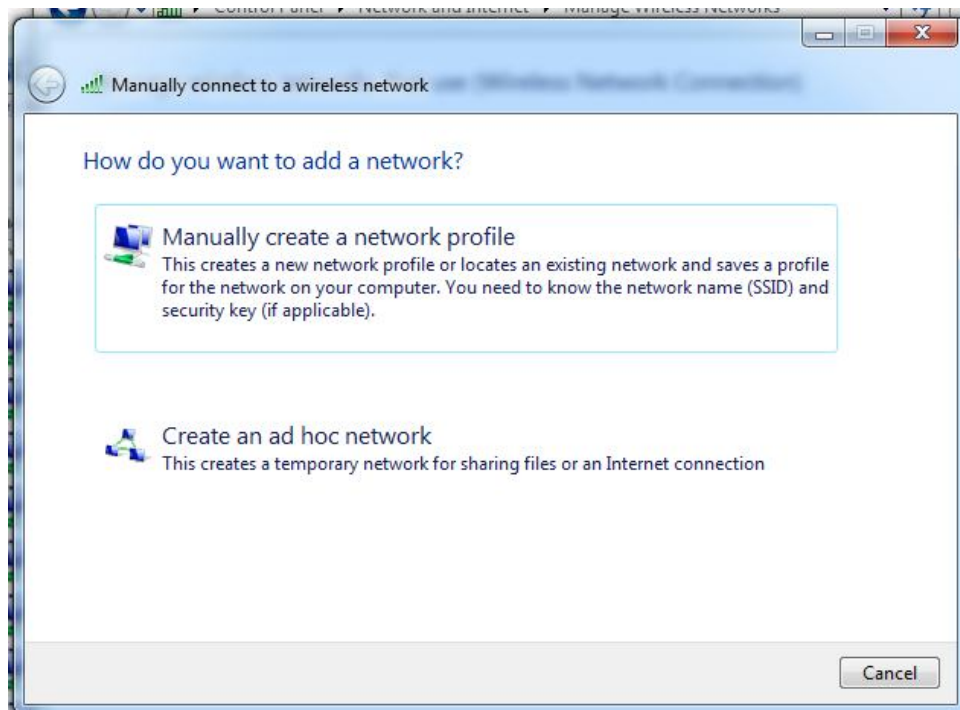




3. Click on 'Add'



4. Choose 'Manually Create a network profile'





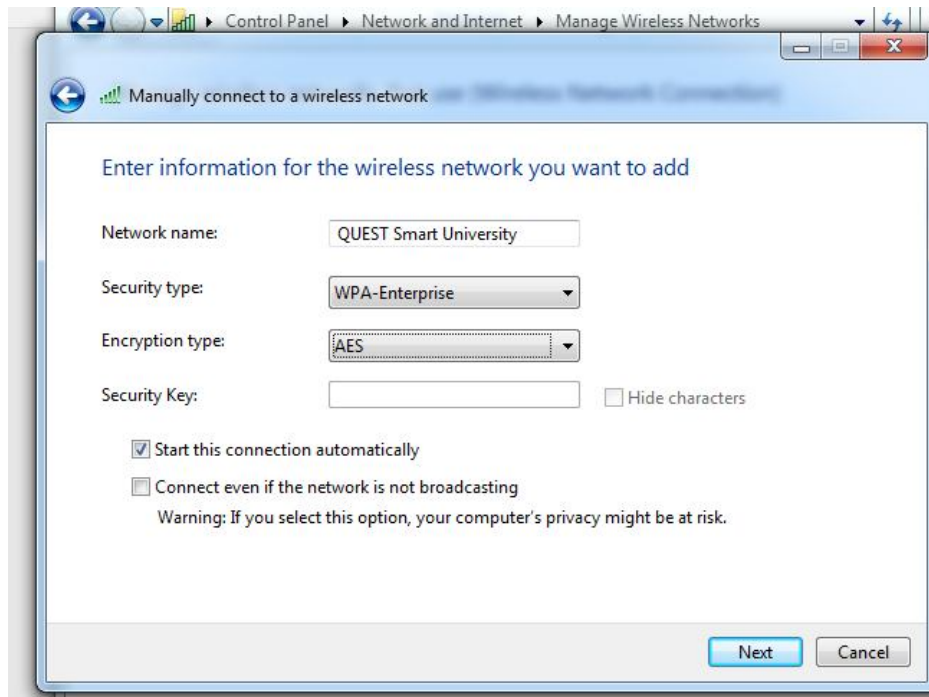
5. On network name write “QUEST Smart University”

Security type ‘WPA-Enterprise’

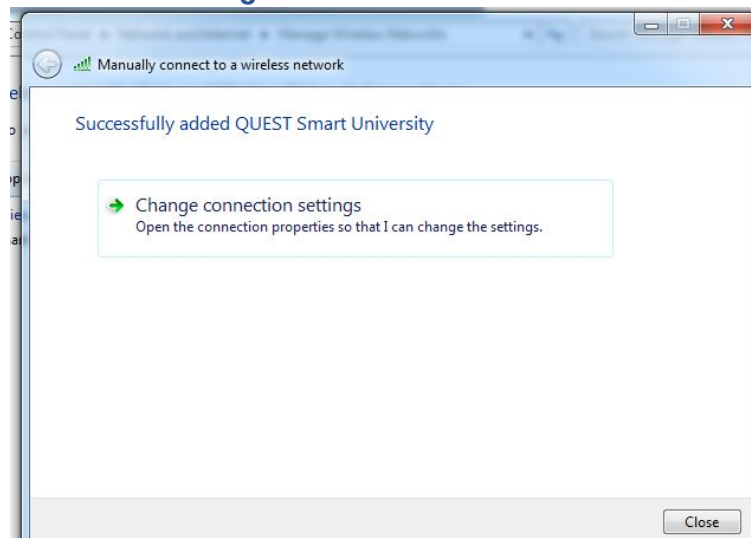
Encryption Type ‘AES’

Leave Security Key ‘Blank’

Click on ‘Next’



6. Go to ‘Change Connection Setting’

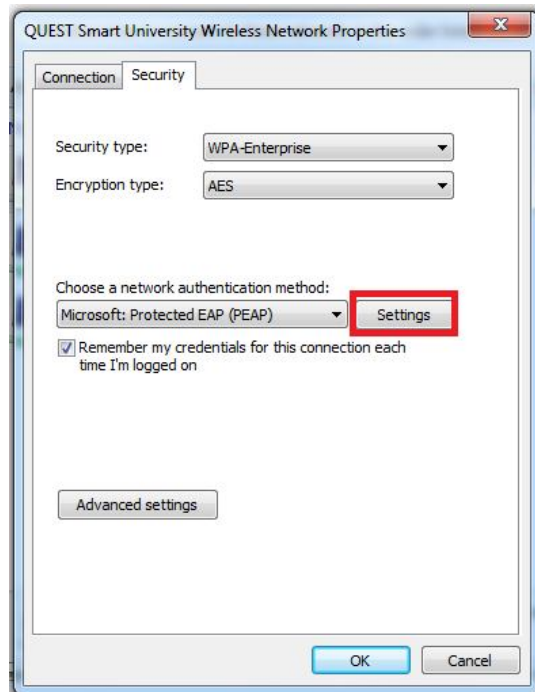




7. Select Security Type 'WPA-Enterprise'

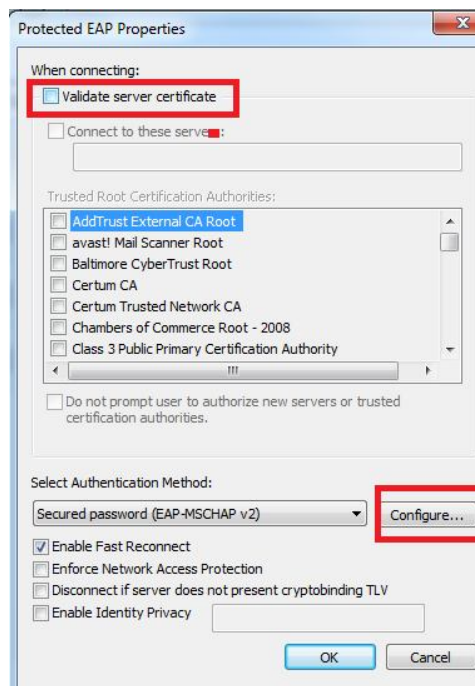
Encryption Type 'AES'

Network Authentication Method: Microsoft: Protected EAP (PEAP) and then click setting



8. Uncheck 'Validate server certificate'

Click on 'Configure'





9. Uncheck Automatically use my windows logon name and password (and domain if any) press OK



10. Forget / Disconnect or Reconnect with QUEST Smart University

11. Provide Your Institutional Username and Password



12. Now you are ready to connect

